

# **MONTREY BAY LIVESTOCK PRODUCER SURVEY**

**CA Center for Cooperative Development**

**Luis Sierra**

**1**

# THIS REPORT ON SURVEY RESPONSES

- Focuses on recent and current processing practices and numbers
- Looks to help answer the main question:
  - Are there sufficient numbers of animals to support a new slaughter and/or cut-wrap facility?
- There are still producers we don't know about
- There are producers outside of the immediate trade area that are potential users
- Contra Costa RCD also surveying beef producers
- Additional interviews will add to the final report

# SURVEYS AND INTERVIEWS

## Asked

- Do you sell meat or live on the hoof?
- How many animals do you process for meat (2013-2015)
- What facilities do you use?
- What distance do you travel for current processing?
- Why do you use the processors you use now?

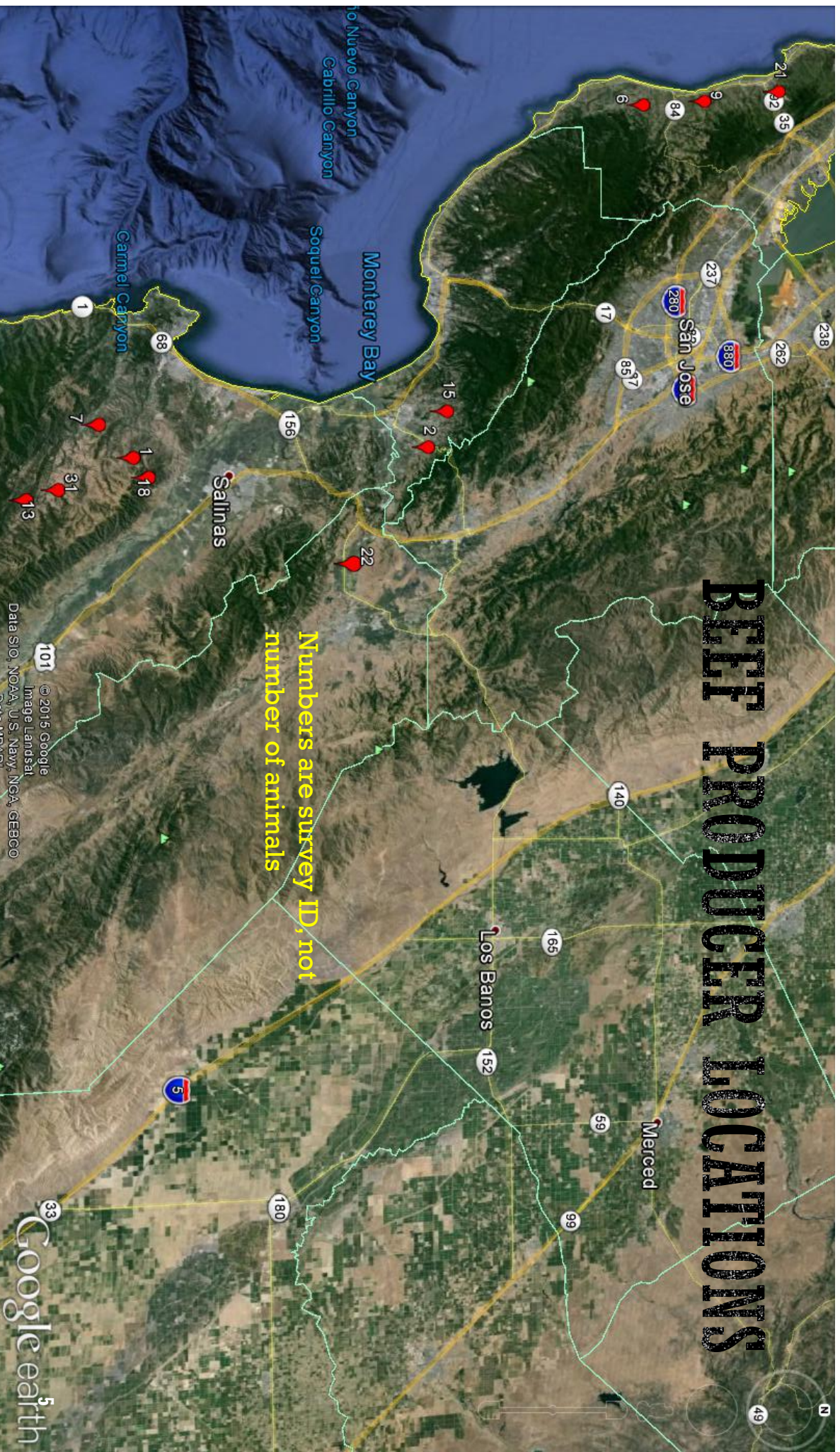
# WHO DID WE INTERVIEW?

- Gathered 65 contacts
- 11 contacts were not viable: out of business, out of area, or redundant
- 35 surveys or interviews were completed
- 19 did not respond
- Producers who stated they only do processing on-farm with no or informal sales excluded

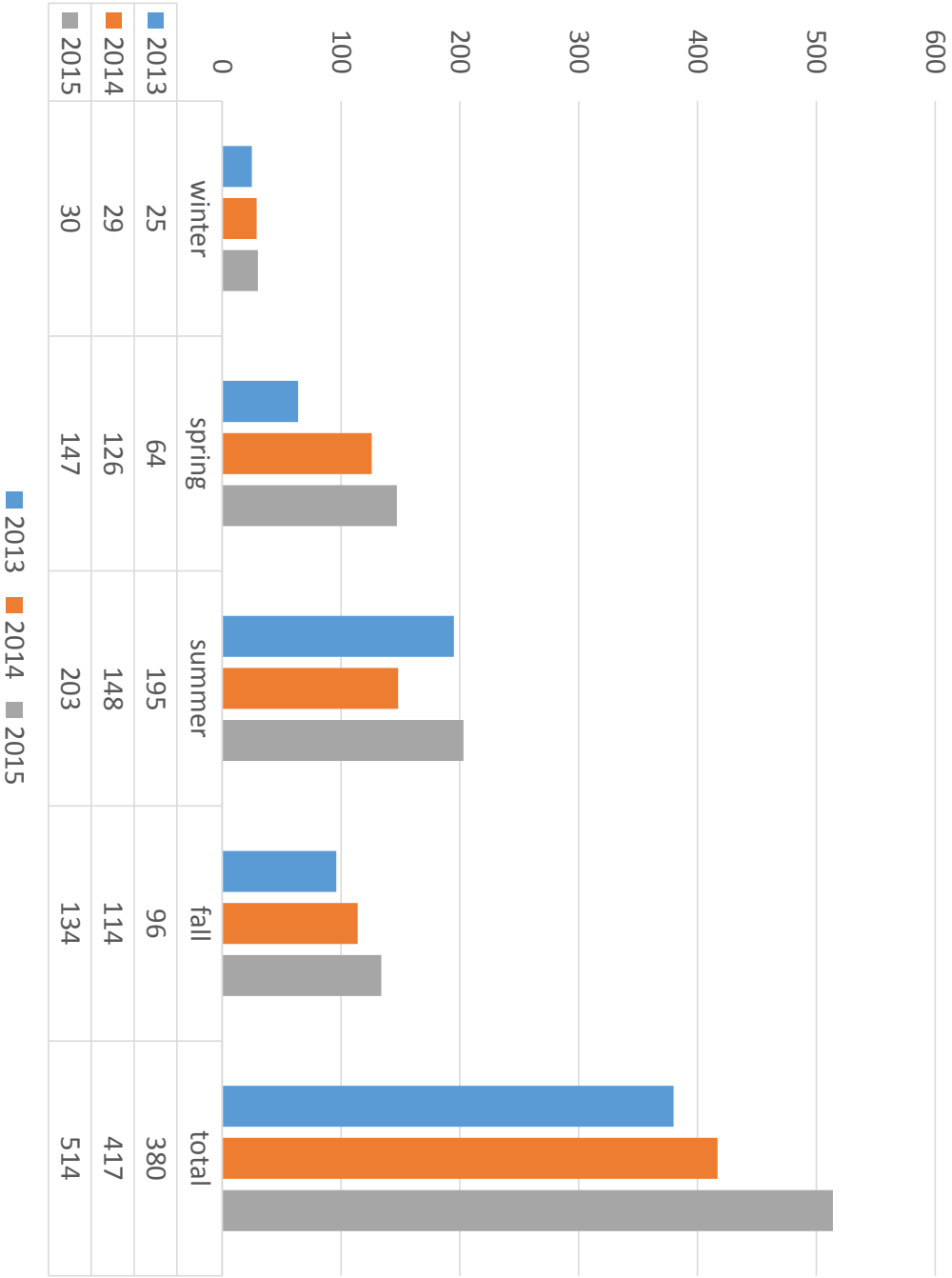


# BEEF PRODUCER LOCATIONS

Numbers are survey ID, not  
number of animals



Beef processed for marketing



# BEEF PROCESSING

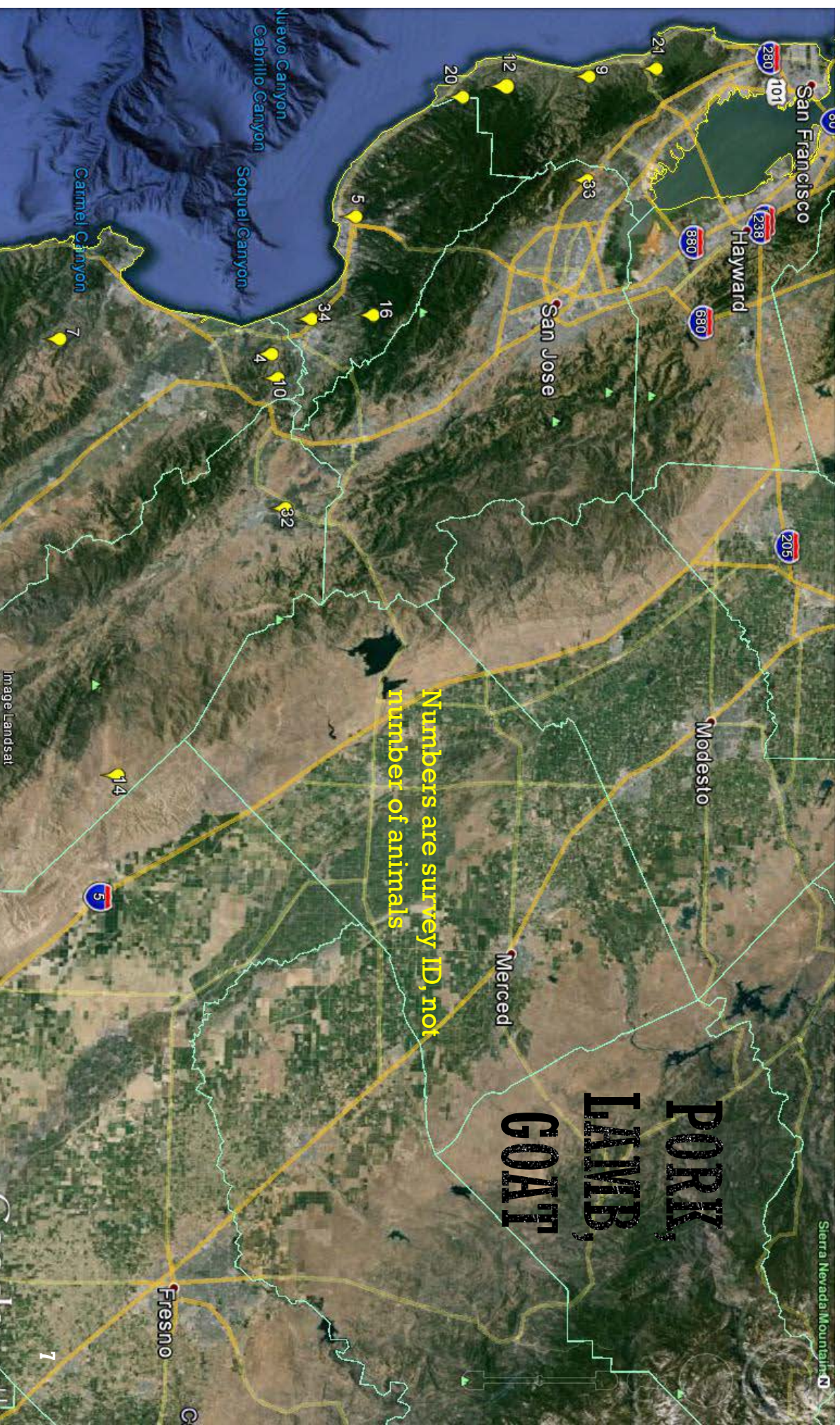
12 producers

Top 3 producers in 2015 = 390 head



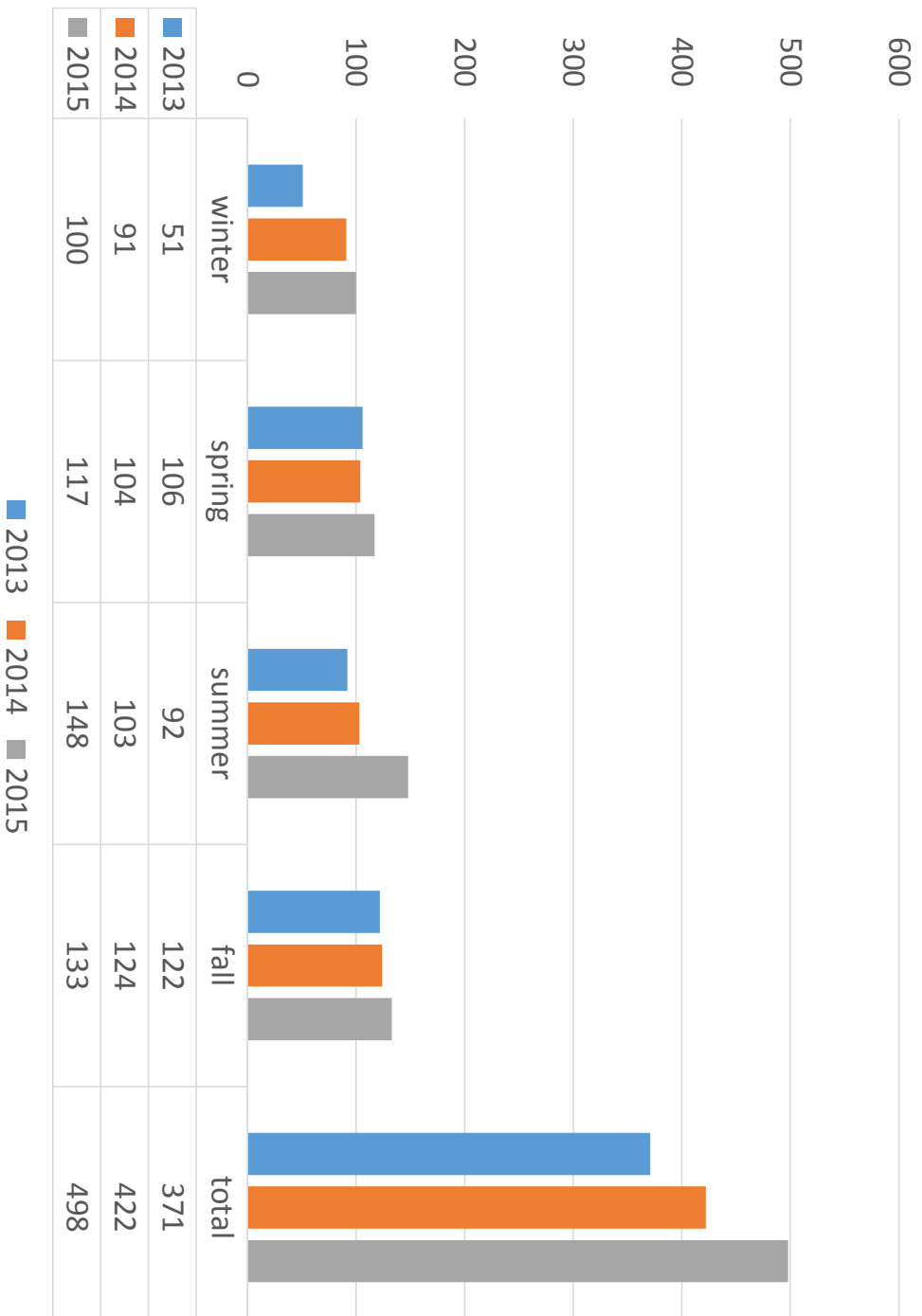
# PORK, LAMB, GOAT

Numbers are survey ID, not  
number of animals





## Pork processed for marketing



## PORK PROCESSED FOR MARKETING

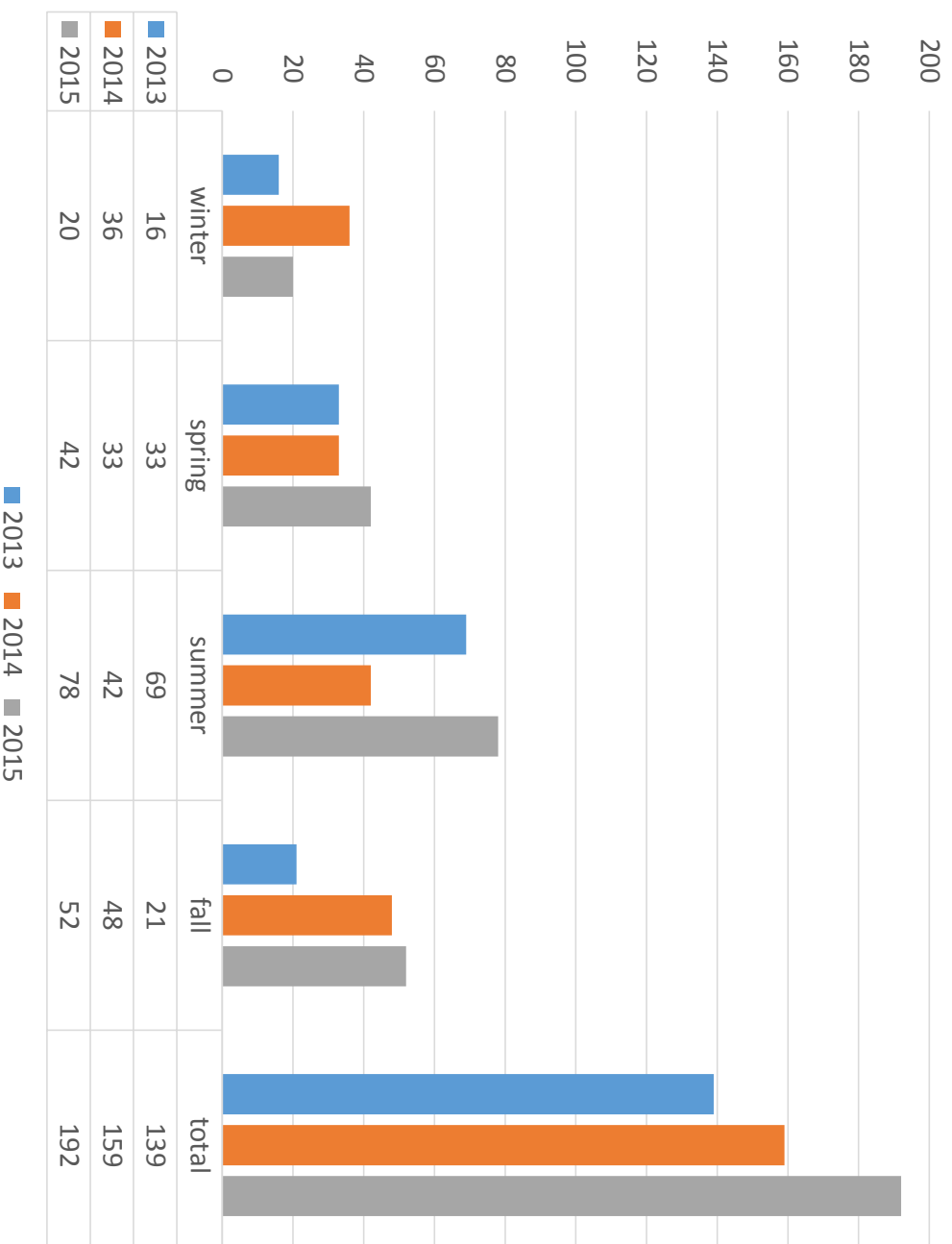
Not as beef equivalents

11 producers

Top 3 represent 61% of total



## Lamb and goat processed for marketing



## TOTAL LAMB AND GOATS PROCESSED FOR MARKETING

Total Producers: 5

Production fairly even among producers

## Red Meat in BE Projections



## BEEF, PORK, LAMB AND GOAT (AS BEEF EQUIVALENTS)

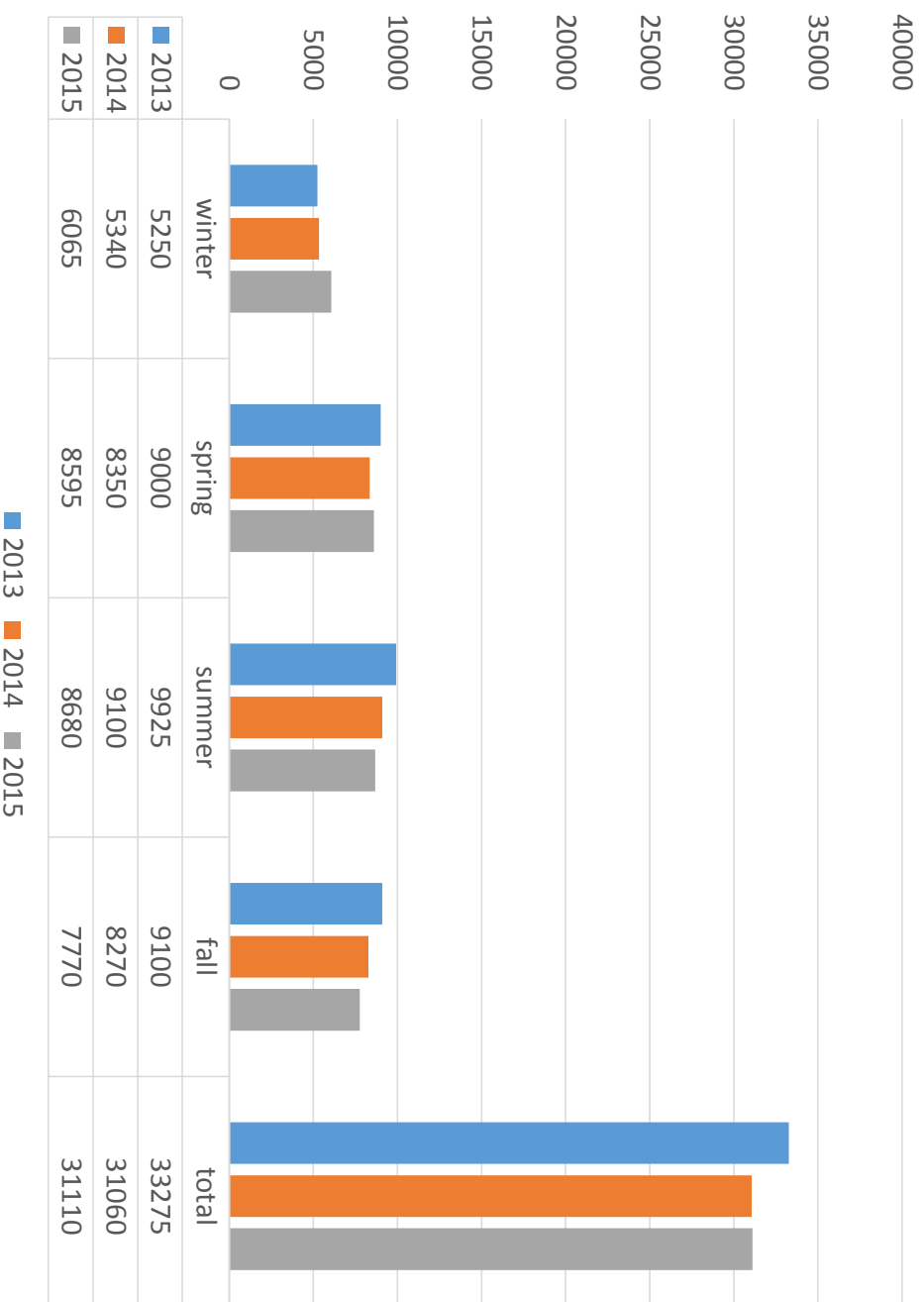
6 producers represent 593 beef  
equivalents, or 76% of all production  
in this survey







## Chicken processing for meat



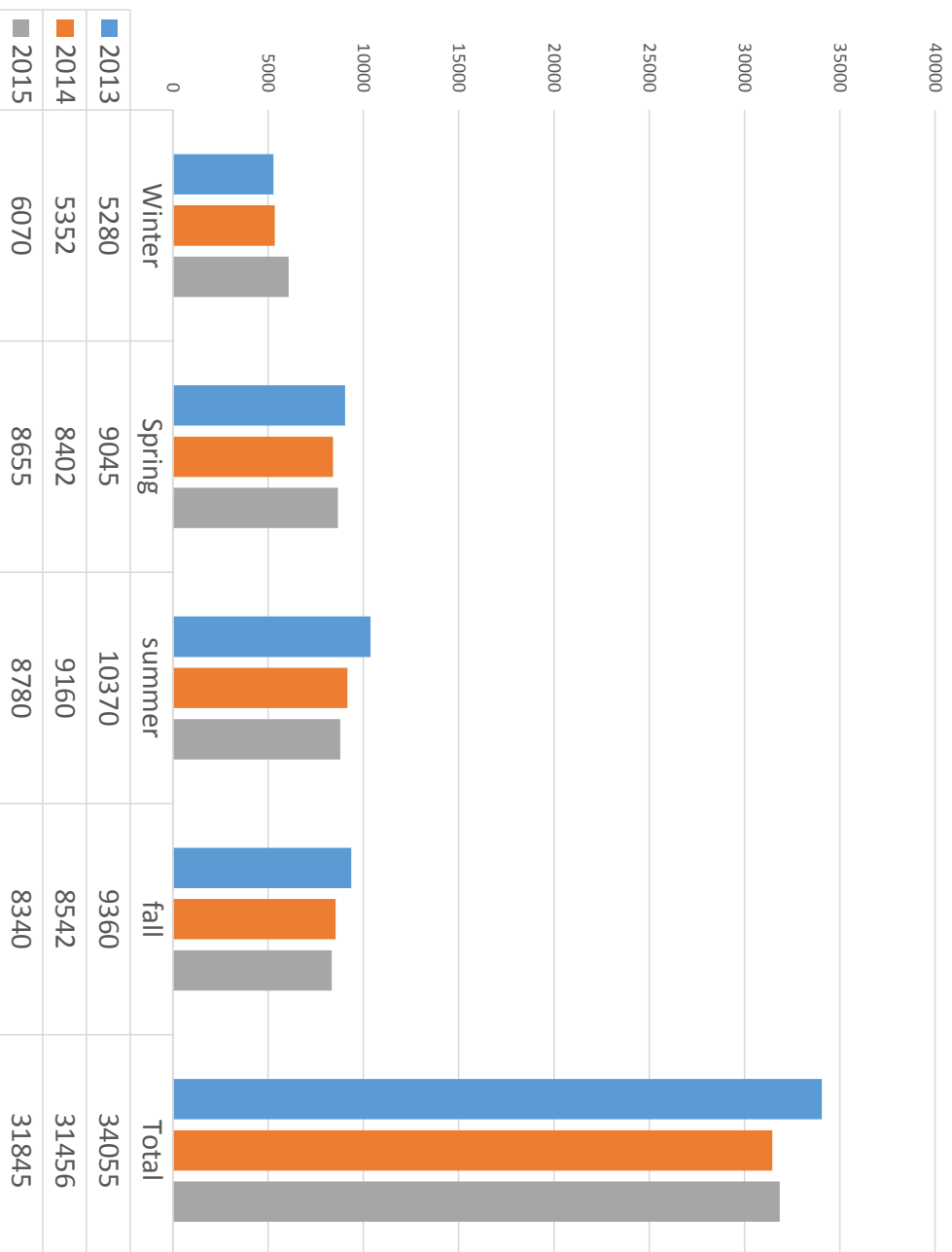
## CHICKEN PROCESSING FOR MEAT

Total producers: 13

Top 3 producers represent

26,825 or 86%

## All Poultry and Rabbit

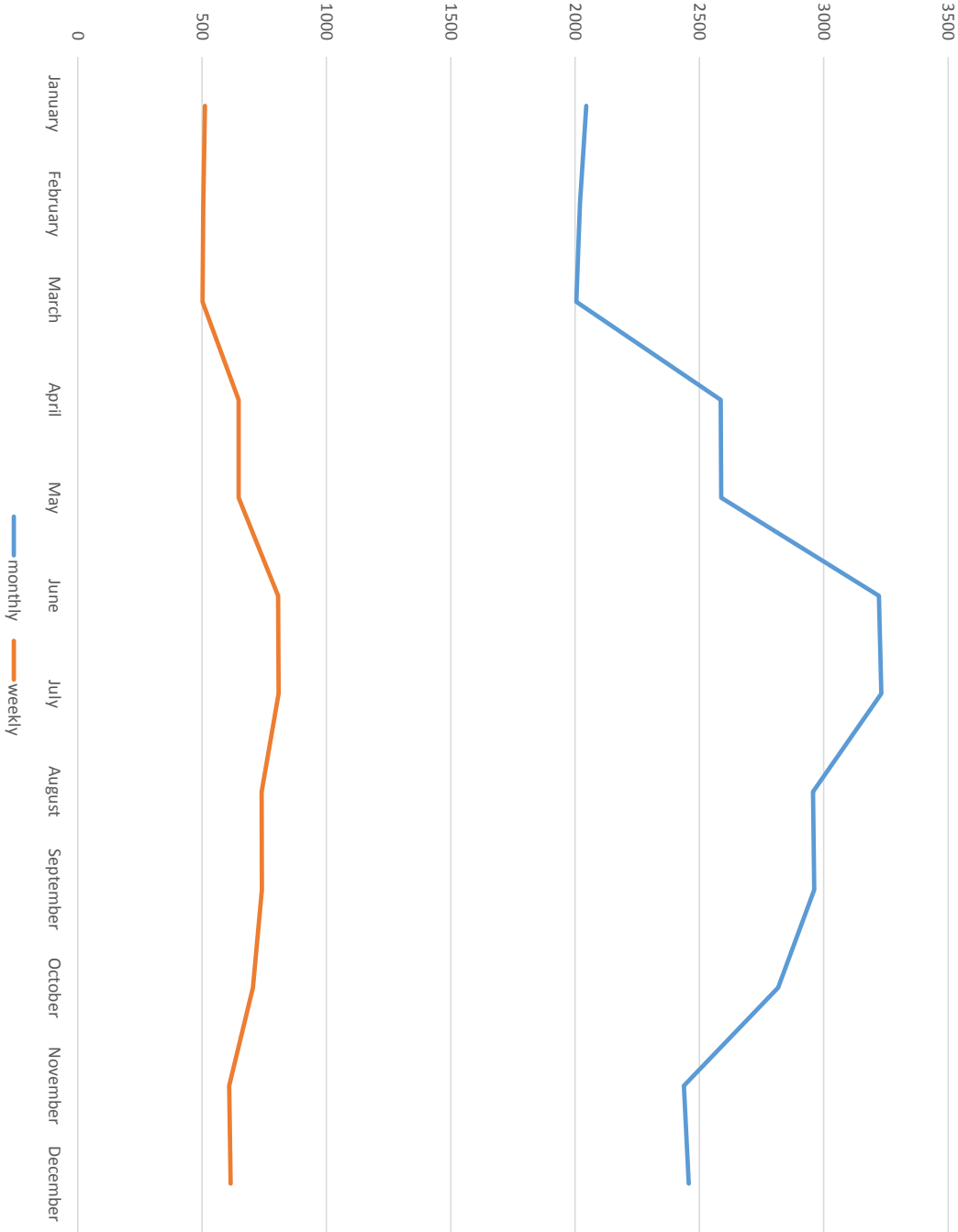


## ALL POULTRY AND RABBIT PROCESSING

Total chicken, turkey, geese, duck,  
and rabbit

Total producers: 13

Poultry and Rabbit Processing by Month & Week

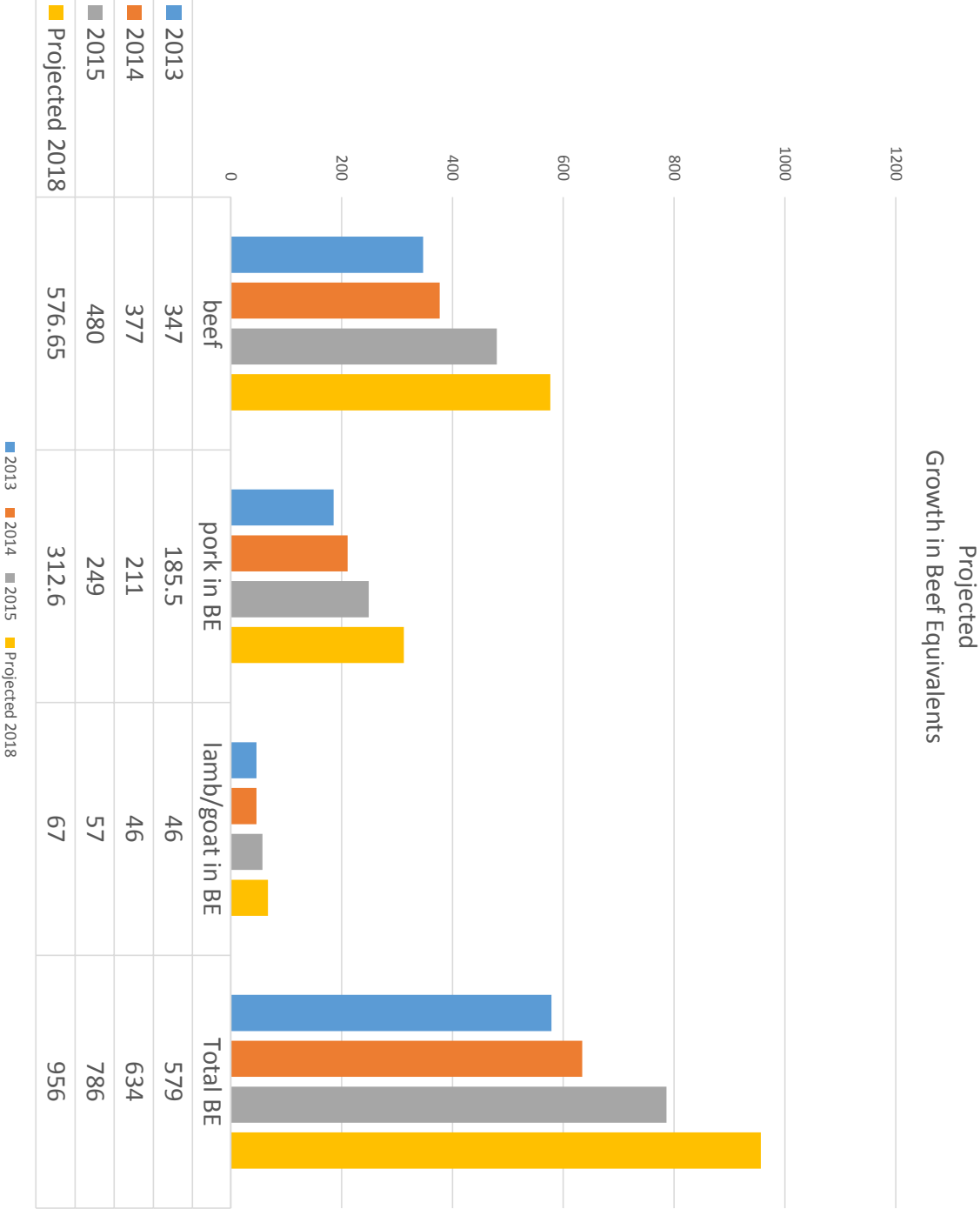


**POULTRY AND  
RABBIT  
PROCESSING BY  
MONTH AND WEEK**



# IMPORTANT CONSIDERATIONS

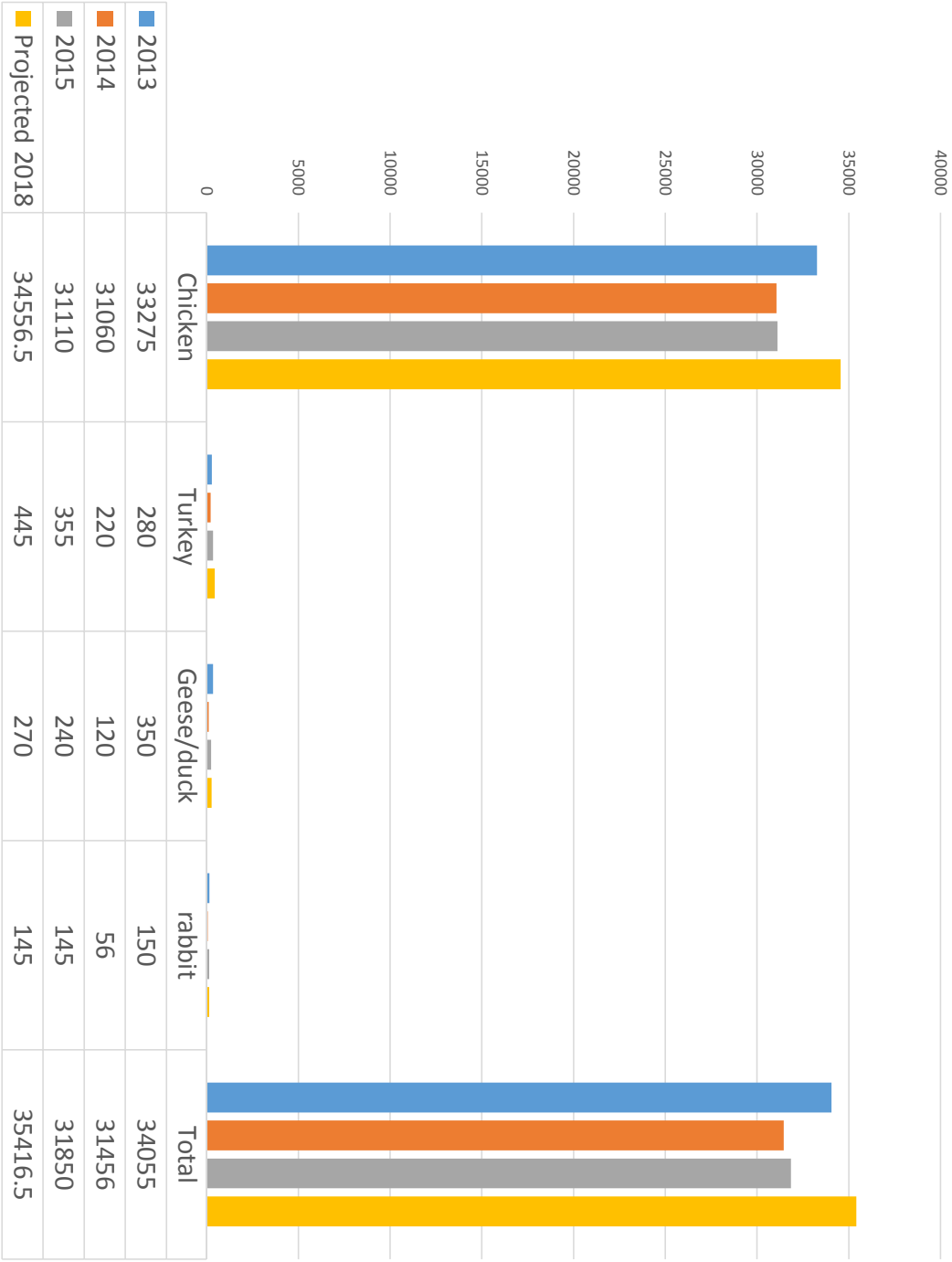
- More than half of the potential red meat and poultry throughput comes from 6 operations.
- Numbers represented here are total potential. It does not predict what percent of this production would go to a new facility in the first year(s).
- How is the drought impacting the numbers reported?
  - Auction prices for red meats
  - Pasture
  - Feed prices



# PROJECTED BEEF EQUIVALENTS TO 2018

Some producers reported significant  
planned growth through 2018

# Poultry and Rabbit Projections to 2018



■ 2013   ■ 2014   ■ 2015   ■ Projected 2018

# POULTRY AND RABBIT PROJECTIONS TO 2018

Not much planned growth in poultry and rabbits



# PRODUCERS AND FACILITIES

